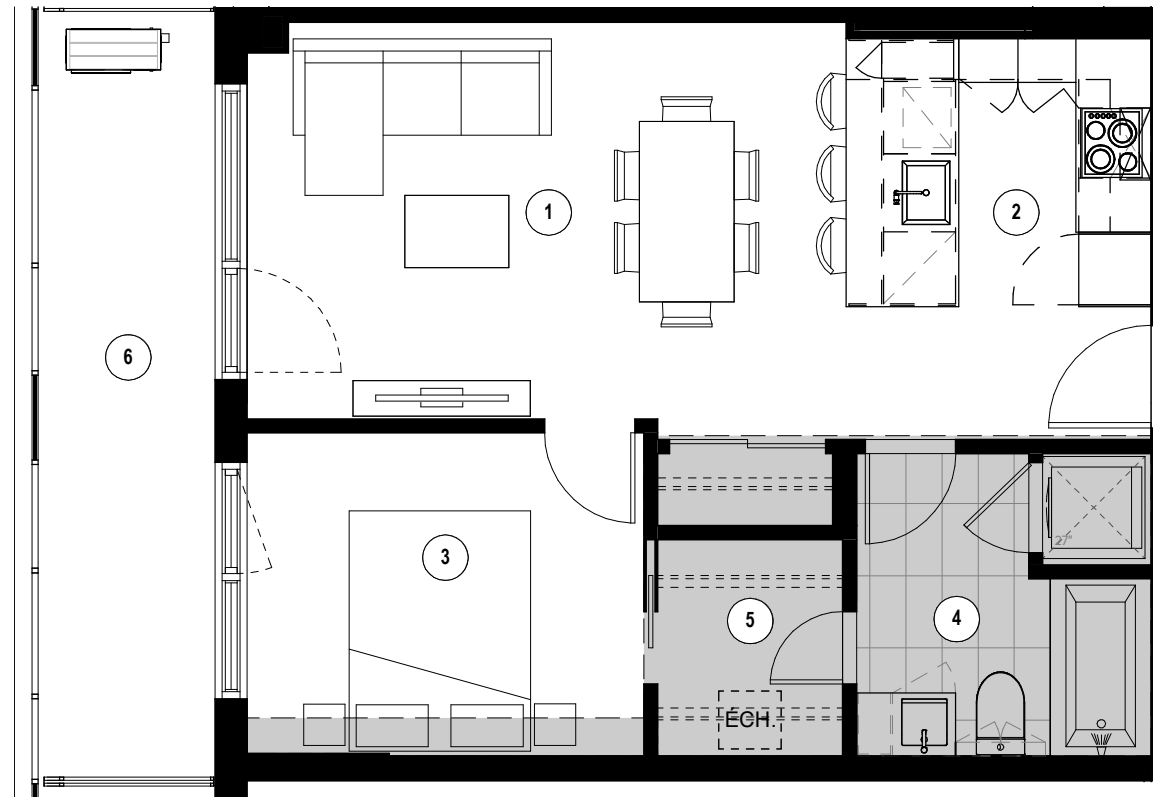
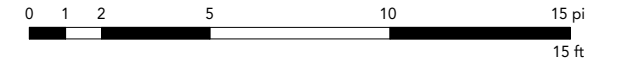


Retombées
de plafond
Dropped Ceiling



- | | | | | | |
|---|---|--|--|------------------------------|---|
| 1 | 2 | 3 | 4 | 5 | 6 |
| Séjour - Salle à manger
Living Room - Dining Room
17' - 7" x 11' - 0" | Cuisine
Kitchen
7' - 6" x 7' - 6" | Chambre
Bedroom
11' - 0" x 9' - 0" | Salle de bain
Bathroom
8' - 2" / 4' - 9" x 8' - 6" / 5' - 0" | Walk-in
5' - 2" x 6' - 1" | Balcon
Balcony
5' - 0" x 21' - 6" |

Plans préliminaires sujets à changement. La superficie brute des logements n'inclut pas celle des balcons et/ou terrasses. La superficie et la dimension des plans de vente sont approximatives et peuvent varier. / Preliminary plans subject to modifications. The unit area excludes the balcony and/or terraces. The areas are approximate and are subject to variation.



TYPE
C7A

UNITÉ(S) - UNIT(S)
515, 615, 715, 815, 915, 1015, 1115, 1215, 1415

SUPERFICIE - AREA
555 pi²/sq²