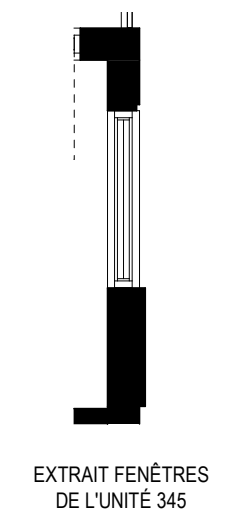
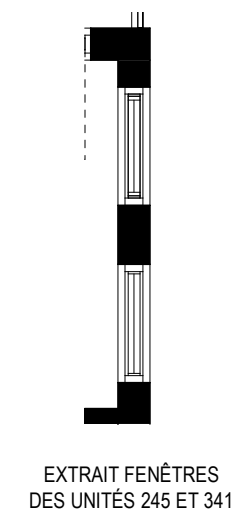
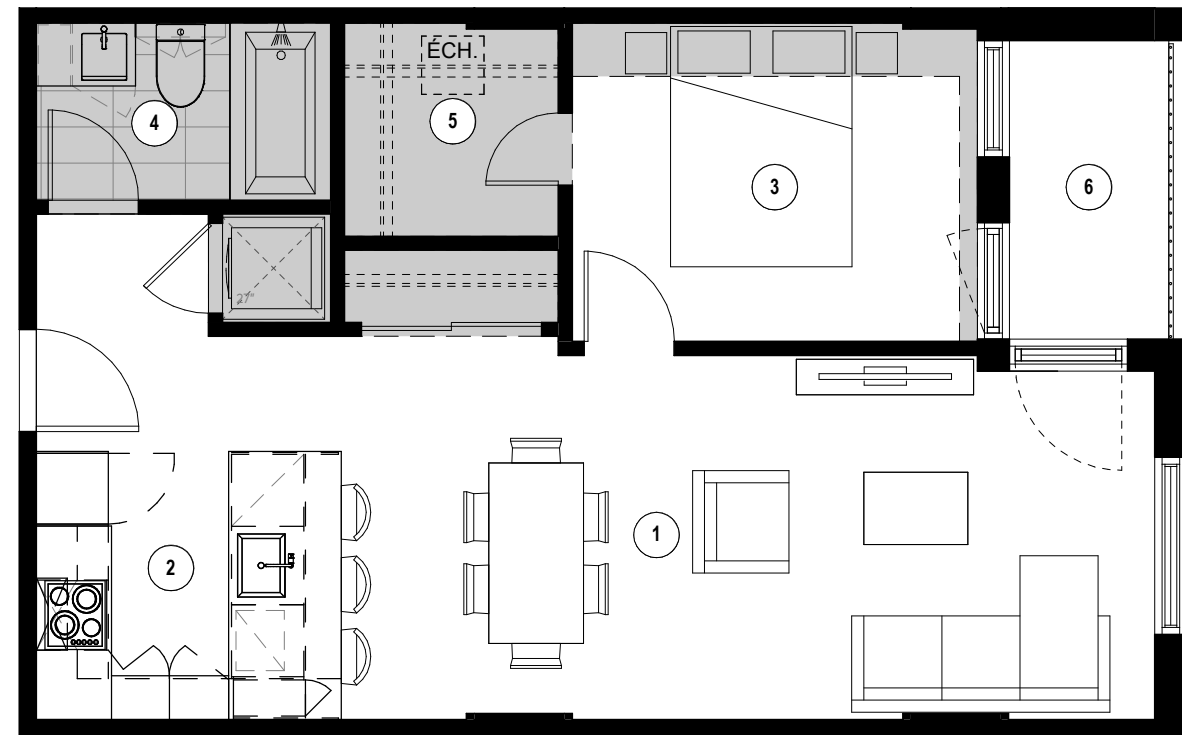


Retombées de plafond
Dropped Ceiling



- 1**

Séjour - Salle à manger
Living Room - Dining Room
23' - 7" x 10' - 1"
- 2**

Cuisine
Kitchen
7' - 6" x 7' - 6"
- 3**

Chambre
Bedroom
11' - 3" x 8' - 10"
- 4**

Salle de bain
Bathroom
8' - 2" x 5' - 0"
- 5**

Walk-in
6' - 0" x 6' - 0"
- 6**

Balcon
Balcony
4' - 5" x 8' - 3"

Plans préliminaires sujets à changement. La superficie brute des logements n'inclut pas celle des balcons et/ou terrasses. La superficie et la dimension des plans de vente sont approximatives et peuvent varier. / Preliminary plans subject to modifications. The unit area excludes the balcony and/or terraces. The areas are approximate and are subject to variation.



TYPE
D11-INV

UNITÉ(S) - UNIT(S)
241, 245, 341, 345

SUPERFICIE - AREA
603 pi²/sq²