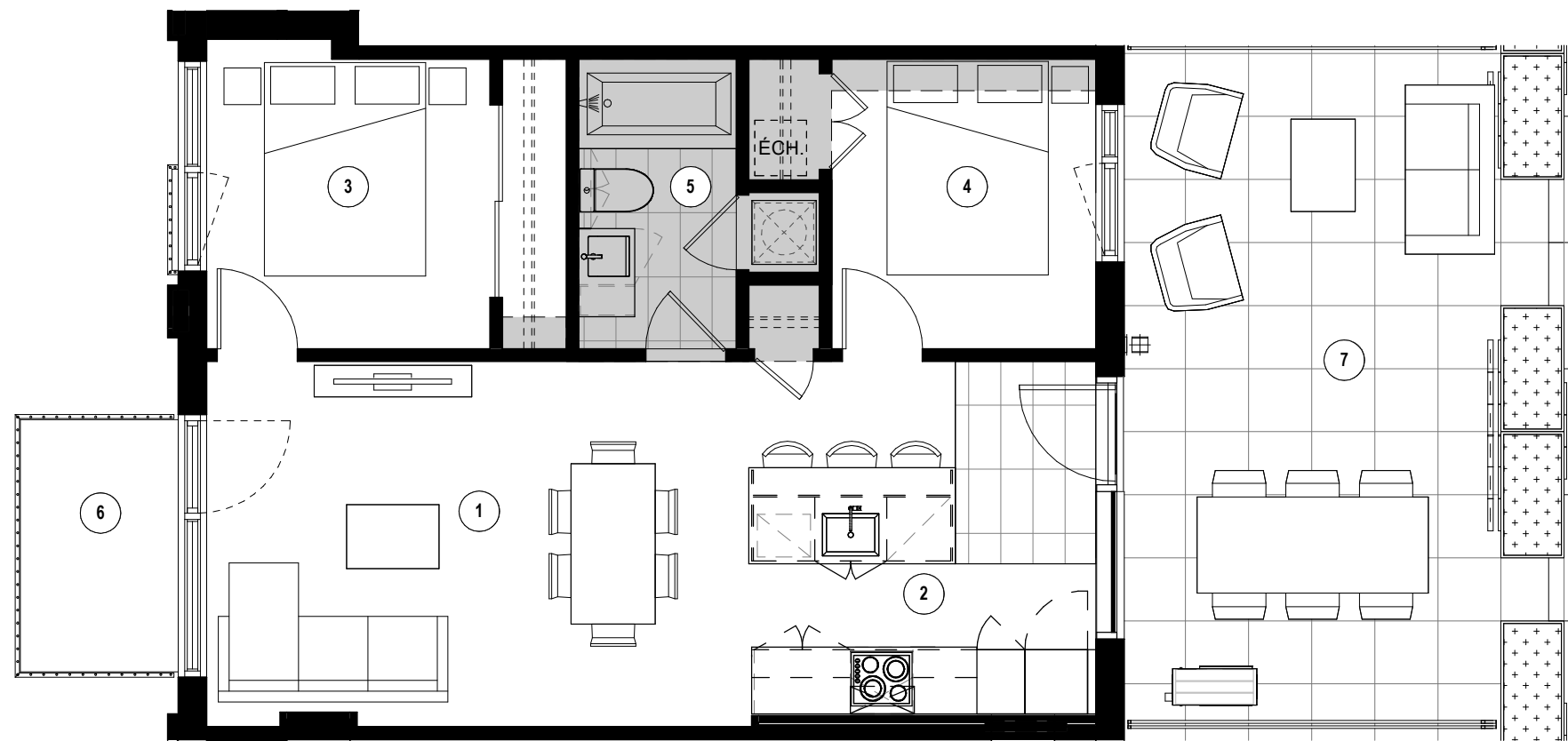
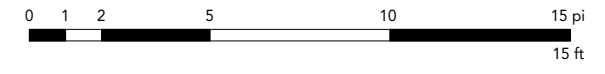


Retombées  
de plafond  
Dropped Ceiling



- 1

Séjour - Salle à manger  
Living Room - Dining Room  
17'-0" x 11'-5"
- 2

Cuisine  
Kitchen  
10'-10" x 11'-1"
- 3

Chambre  
Bedroom  
8'-10" x 9'-1"
- 4

Chambre  
Bedroom  
8'-3" x 9'-1"
- 5

Salle de bain  
Bathroom  
5'-0" x 9'-1"
- 6

Balcon  
Balcony  
5'-0" x 8'-2"
- 7

Terrasse  
Terrace  
13'-9" x 21'-5"

Plans préliminaires sujets à changement. La superficie brute des logements n'inclut pas celle des balcons et/ou terrasses. La superficie et la dimension des plans de vente sont approximatives et peuvent varier. / Preliminary plans subject to modifications. The unit area excludes the balcony and/or terraces. The areas are approximate and are subject to variation.

	<b>TYPE</b> D2B	<b>UNITÉ(S) - UNIT(S)</b> 211	<b>SUPERFICIE - AREA</b> 651 pi <sup>2</sup> /sq <sup>2</sup>
--	--------------------	----------------------------------	--