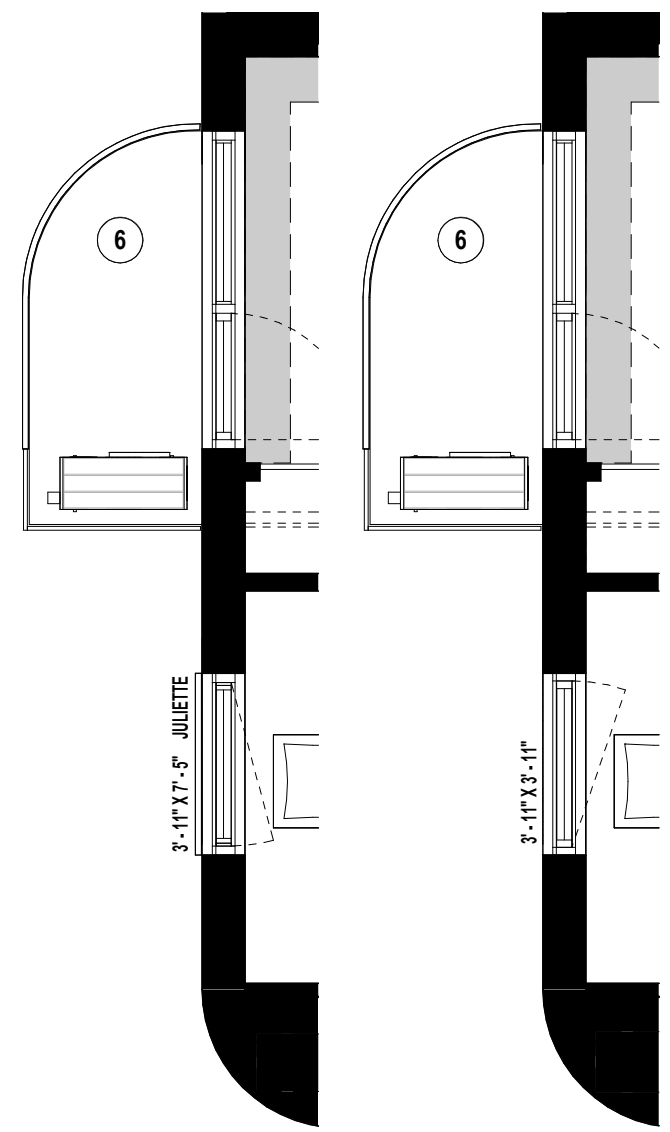
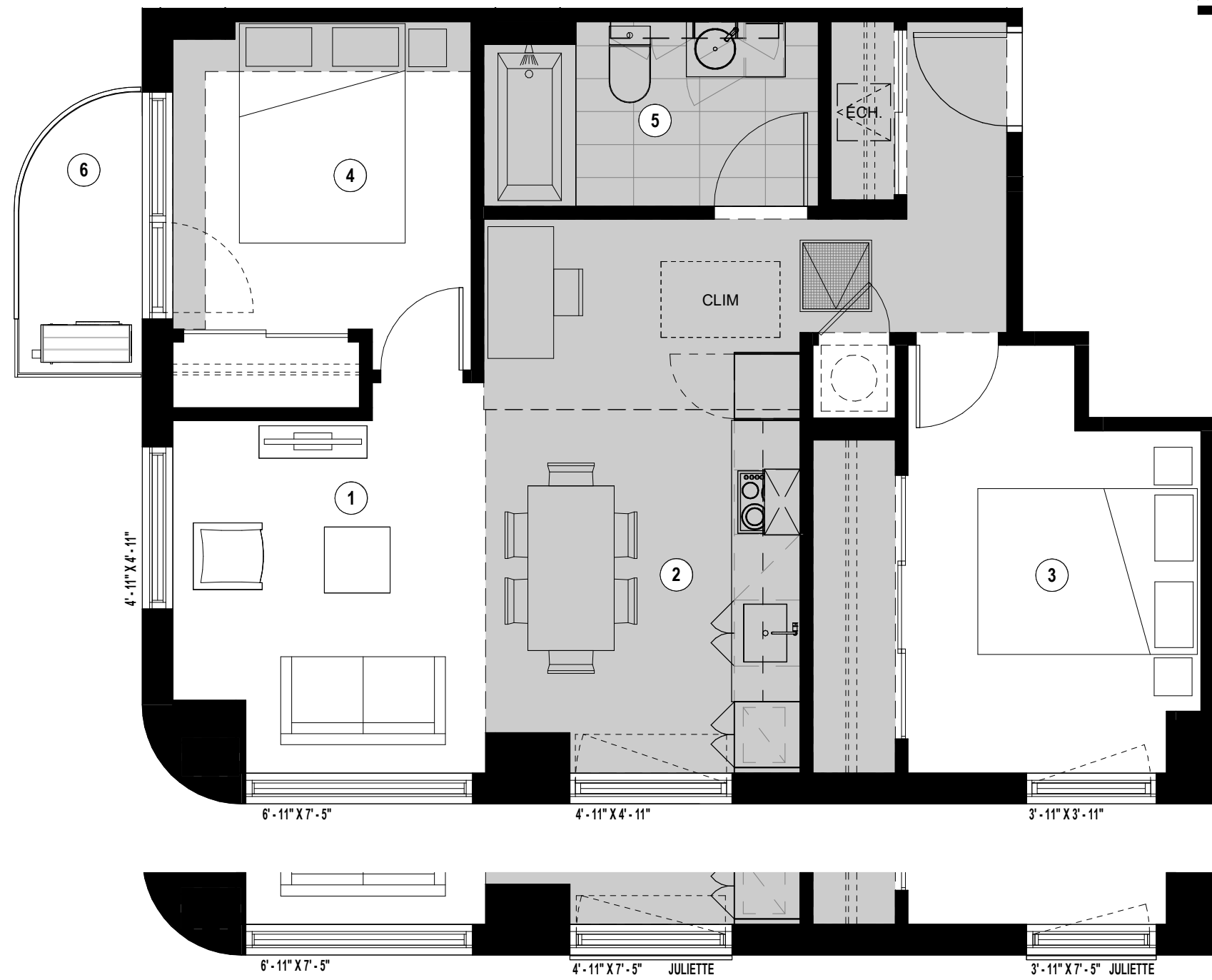


Retombées de plafond  
Dropped Ceiling



EXTRAIT FENÊTRE DE L'UNITÉ 1707

EXTRAIT FENÊTRE DE L'UNITÉ 1207



6'-11" X 7'-5"

4'-11" X 4'-11"

3'-11" X 3'-11"

6'-11" X 7'-5"

4'-11" X 7'-5" JULIETTE

3'-11" X 7'-5" JULIETTE

EXTRAIT FENÊTRE DE L'UNITÉ 1707

- 1 - Séjour  
Living Room  
9'-6" x 10'-8"
- 2 - Cuisine - Salle à manger - Bureau  
Kitchen - Dining Room - Office  
9'-7" x 16'-10"
- 3 - Chambre Principale  
Master Bedroom  
9'-0" x 10'-4"
- 4 - Chambre 2  
2nd Bedroom  
9'-1" x 9'-4"
- 5 - Salle de bain  
Bathroom  
10'-2" / 7'-4" x 5'-7" / 5'-0"
- 6 - Balcon  
Balcony  
3'-9" x 8'-6" / 5'-0"

Plans préliminaires sujets à changement. La superficie brute des logements n'inclut pas celle des balcons et/ou terrasses. La superficie et la dimension des plans de vente sont approximatives et peuvent varier. / Preliminary plans subject to modifications. The unit area excludes the balcony and/or terraces. The areas are approximate and are subject to variation.



TYPE  
**E3B**

UNITÉ(S) - UNIT(S)  
**1007, 1207, 1507, 1707**

SUPERFICIE - AREA  
**717 pi<sup>2</sup>/sq<sup>2</sup>**

**Phase 3**



## EXTERIOR AND BUILDING FEATURES

- Brick and metal panel cladding
- Interior green courtyard with outdoor furniture
- Concrete structure

## UNIT FEATURES

- Slab-to-slab ceiling height of about 9' (except on the ground floor)
- Exposed concrete ceiling with sealer (except on the last floor)
- Choice of pre-varnished engineered wood floors
- Living room wall reinforcement for television

## KITCHEN

- Choice of cabinet colours and finishes
- Choice of quartz countertops
- Choice of ceramic tile backsplash
- Stainless steel single sink with lever faucet
- Included appliances (varies by unit):
  - ⇒ Built-in hood or microwave hood
  - ⇒ Panel-ready Blomberg refrigerator 24" or stainless steel Fisher & Paykel refrigerator 31"
  - ⇒ Fulgor 24" or 30" built-in range and cooktop
  - ⇒ Bloomberg 18" or 24" panel-ready dishwasher

## BATHROOM

- Choice of ceramic tiles
- Black or chrome fixtures
- Drop-in bathtub with ceramic tile podium
- Choice of colours and finishes for the vanity and medicine cabinet
- Choice of quartz counters

## ELECTRICAL AND TECHNICAL FEATURES

- Electric baseboard heaters with digital thermostats
- Air exchanger
- Central air conditioner or with compressor (depending on unit)
- Pre-wired Ethernet CAT6
- Pre-wired to the unit for fibre optics
- White or black track lighting in the kitchen and LED lighting under part of the cabinets
- Two recessed ceiling lights in the bathroom and integrated LED lighting in the medicine cabinet
- Lighting outlet in the bedroom ceiling, in the wall at the entrance, and in the dining room

## COMMON SPACES AND AMENITIES

- Two elevators
- Access to the temporary fitness centre in Lot 2
- Permanent fitness centre on a future lot
- Furnished lobby
- Furnished coworking space
- Rooftop terrace with pool, barbecues, and outdoor furniture

## OTHER AMENITIES

- Secure access for residents with key fob entry, security camera system, and intercom
- Centralized hot water
- Registered with the Guarantee of Construction Quality (GHMB) by Master Builders