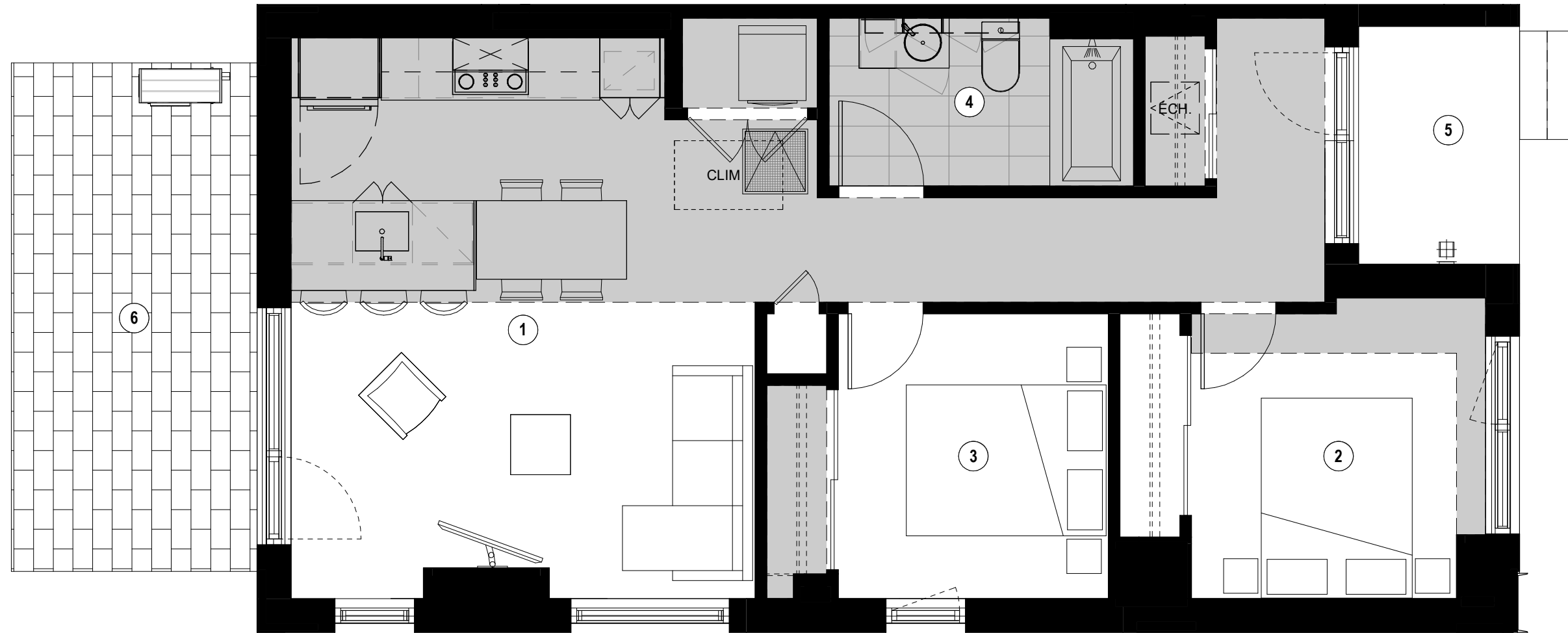


Retombées  
de plafond  
Dropped Ceiling



1

Séjour - Salle à manger - Cuisine  
Living Room - Dining Room - Kitchen  
15' - 6" / 12' - 6" x 18' - 8" / 16' - 0"

2

Chambre Principale  
Master Bedroom  
9' - 10" x 9' - 6"

3

Chambre 2  
2nd Bedroom  
9' - 0" x 9' - 6"

4

Salle de bain  
Bathroom  
10' - 2" / 7' - 4" x 5' - 7" / 5' - 0"

5

Terrasse 1  
1st Terrace  
5' - 4" x 8' - 0"

6

Terrasse 2  
2nd Terrace  
8' - 2" x 17' - 0"

Plans préliminaires sujets à changement. La superficie brute des logements n'inclut pas celle des balcons et/ou terrasses. La superficie et la dimension des plans de vente sont approximatives et peuvent varier. / Preliminary plans subject to modifications. The unit area excludes the balcony and/or terraces. The areas are approximate and are subject to variation.



TYPE  
F1

UNITÉ(S) - UNIT(S)  
123

SUPERFICIE - AREA  
834 pi<sup>2</sup>/sq<sup>2</sup>

Phase 3



## EXTERIOR AND BUILDING FEATURES

- Brick and metal panel cladding
- Interior green courtyard with outdoor furniture
- Concrete structure

## UNIT FEATURES

- Slab-to-slab ceiling height of about 9' (except on the ground floor)
- Exposed concrete ceiling with sealer (except on the last floor)
- Choice of pre-varnished engineered wood floors
- Living room wall reinforcement for television

## KITCHEN

- Choice of cabinet colours and finishes
- Choice of quartz countertops
- Choice of ceramic tile backsplash
- Stainless steel single sink with lever faucet
- Included appliances (varies by unit):
  - ⇒ Built-in hood or microwave hood
  - ⇒ Panel-ready Blomberg refrigerator 24" or stainless steel Fisher & Paykel refrigerator 31"
  - ⇒ Fulgor 24" or 30" built-in range and cooktop
  - ⇒ Bloomberg 18" or 24" panel-ready dishwasher

## BATHROOM

- Choice of ceramic tiles
- Black or chrome fixtures
- Drop-in bathtub with ceramic tile podium
- Choice of colours and finishes for the vanity and medicine cabinet
- Choice of quartz counters

## ELECTRICAL AND TECHNICAL FEATURES

- Electric baseboard heaters with digital thermostats
- Air exchanger
- Central air conditioner or with compressor (depending on unit)
- Pre-wired Ethernet CAT6
- Pre-wired to the unit for fibre optics
- White or black track lighting in the kitchen and LED lighting under part of the cabinets
- Two recessed ceiling lights in the bathroom and integrated LED lighting in the medicine cabinet
- Lighting outlet in the bedroom ceiling, in the wall at the entrance, and in the dining room

## COMMON SPACES AND AMENITIES

- Two elevators
- Access to the temporary fitness centre in Lot 2
- Permanent fitness centre on a future lot
- Furnished lobby
- Furnished coworking space
- Rooftop terrace with pool, barbecues, and outdoor furniture

## OTHER AMENITIES

- Secure access for residents with key fob entry, security camera system, and intercom
- Centralized hot water
- Registered with the Guarantee of Construction Quality (GHMB) by Master Builders