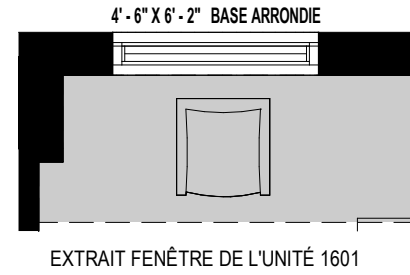
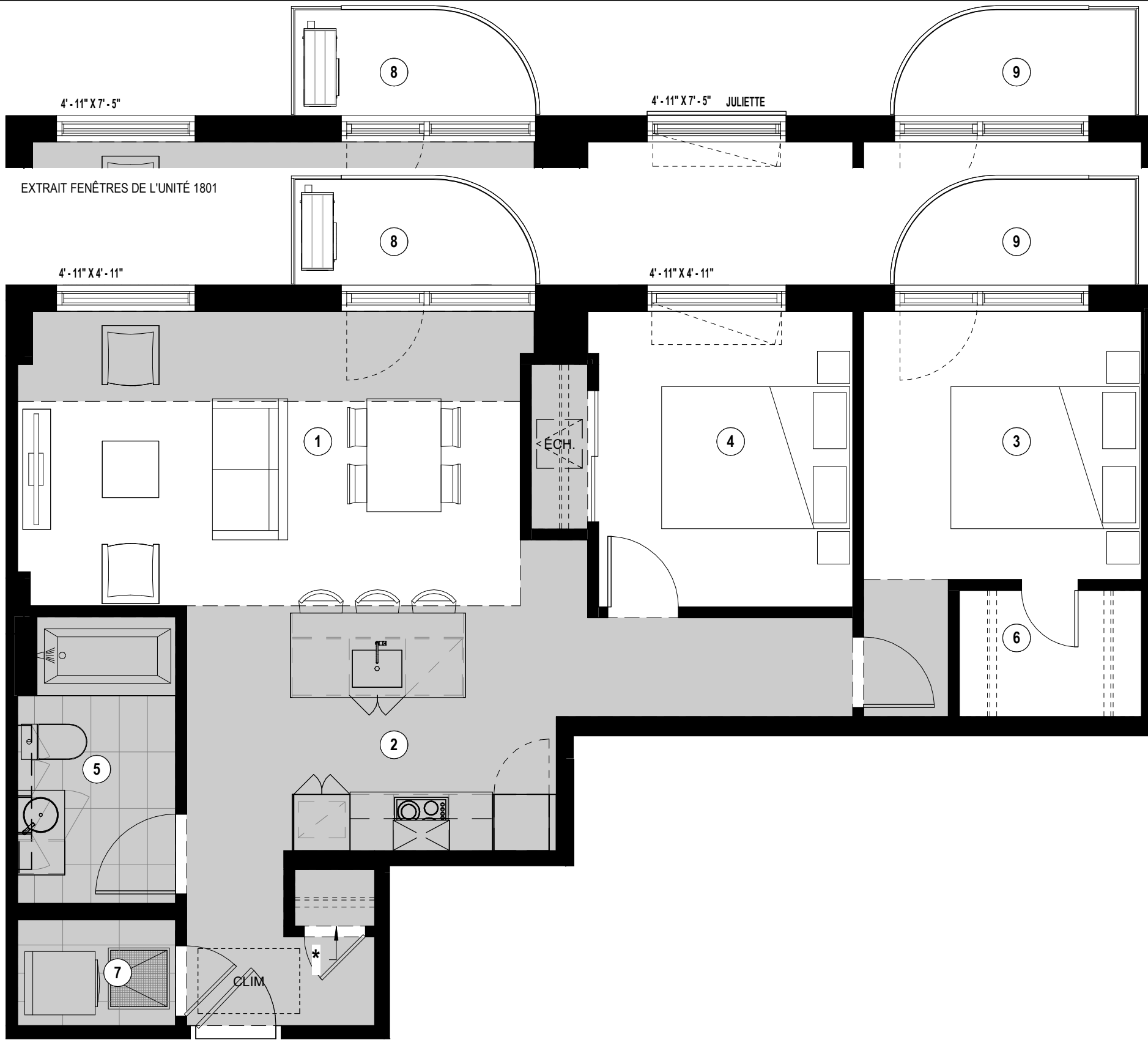


Retombées
de plafond
Dropped Ceiling



* Retombée de plafond de l'unité 1801 seulement
Dropped ceiling of unit 1801 only



4'-11" X 7'-5"

EXTRAIT FENÊTRES DE L'UNITÉ 1801

4'-11" X 4'-11"

4'-11" X 7'-5" JULIETTE

4'-11" X 4'-11"

ÉCH.

CLIM

- 1 - Séjour - Salle à manger
Living Room - Dining Room
17'-10" x 10'-5"
- 2 - Cuisine
Kitchen
9'-6" x 7'-6"
- 3 - Chambre Principale
Master Bedroom
9'-10" x 9'-6"
- 4 - Chambre 2
2nd Bedroom
9'-0" x 10'-6"
- 5 - Salle de bain
Bathroom
5'-7"/5'-0" x 10'-2"/7'-4"
- 6 - Walk-in
6'-5" x 4'-6"
- 7 - Buanderie
Laundry Room
5'-7" x 3'-9"
- 8 - Balcon 1
1st Balcony
8'-6"/5'-0" x 3'-9"
- 9 - Balcon 2
2nd Balcony
8'-6"/5'-0" x 3'-9"

Plans préliminaires sujets à changement. La superficie brute des logements n'inclut pas celle des balcons et/ou terrasses. La superficie et la dimension des plans de vente sont approximatives et peuvent varier. / Preliminary plans subject to modifications. The unit area excludes the balcony and/or terraces. The areas are approximate and are subject to variation.



TYPE
F6B

UNITÉ(S) - UNIT(S)
901, 1101, 1401, 1601, 1801

SUPERFICIE - AREA
802 pi²/sq²

Phase 3



EXTERIOR AND BUILDING FEATURES

- Brick and metal panel cladding
- Interior green courtyard with outdoor furniture
- Concrete structure

UNIT FEATURES

- Slab-to-slab ceiling height of about 9' (except on the ground floor)
- Exposed concrete ceiling with sealer (except on the last floor)
- Choice of pre-varnished engineered wood floors
- Living room wall reinforcement for television

KITCHEN

- Choice of cabinet colours and finishes
- Choice of quartz countertops
- Choice of ceramic tile backsplash
- Stainless steel single sink with lever faucet
- Included appliances (varies by unit):
 - ⇒ Built-in hood or microwave hood
 - ⇒ Panel-ready Blomberg refrigerator 24" or stainless steel Fisher & Paykel refrigerator 31"
 - ⇒ Fulgor 24" or 30" built-in range and cooktop
 - ⇒ Bloomberg 18" or 24" panel-ready dishwasher

BATHROOM

- Choice of ceramic tiles
- Black or chrome fixtures
- Drop-in bathtub with ceramic tile podium
- Choice of colours and finishes for the vanity and medicine cabinet
- Choice of quartz counters

ELECTRICAL AND TECHNICAL FEATURES

- Electric baseboard heaters with digital thermostats
- Air exchanger
- Central air conditioner or with compressor (depending on unit)
- Pre-wired Ethernet CAT6
- Pre-wired to the unit for fibre optics
- White or black track lighting in the kitchen and LED lighting under part of the cabinets
- Two recessed ceiling lights in the bathroom and integrated LED lighting in the medicine cabinet
- Lighting outlet in the bedroom ceiling, in the wall at the entrance, and in the dining room

COMMON SPACES AND AMENITIES

- Two elevators
- Access to the temporary fitness centre in Lot 2
- Permanent fitness centre on a future lot
- Furnished lobby
- Furnished coworking space
- Rooftop terrace with pool, barbecues, and outdoor furniture

OTHER AMENITIES

- Secure access for residents with key fob entry, security camera system, and intercom
- Centralized hot water
- Registered with the Guarantee of Construction Quality (GHMB) by Master Builders