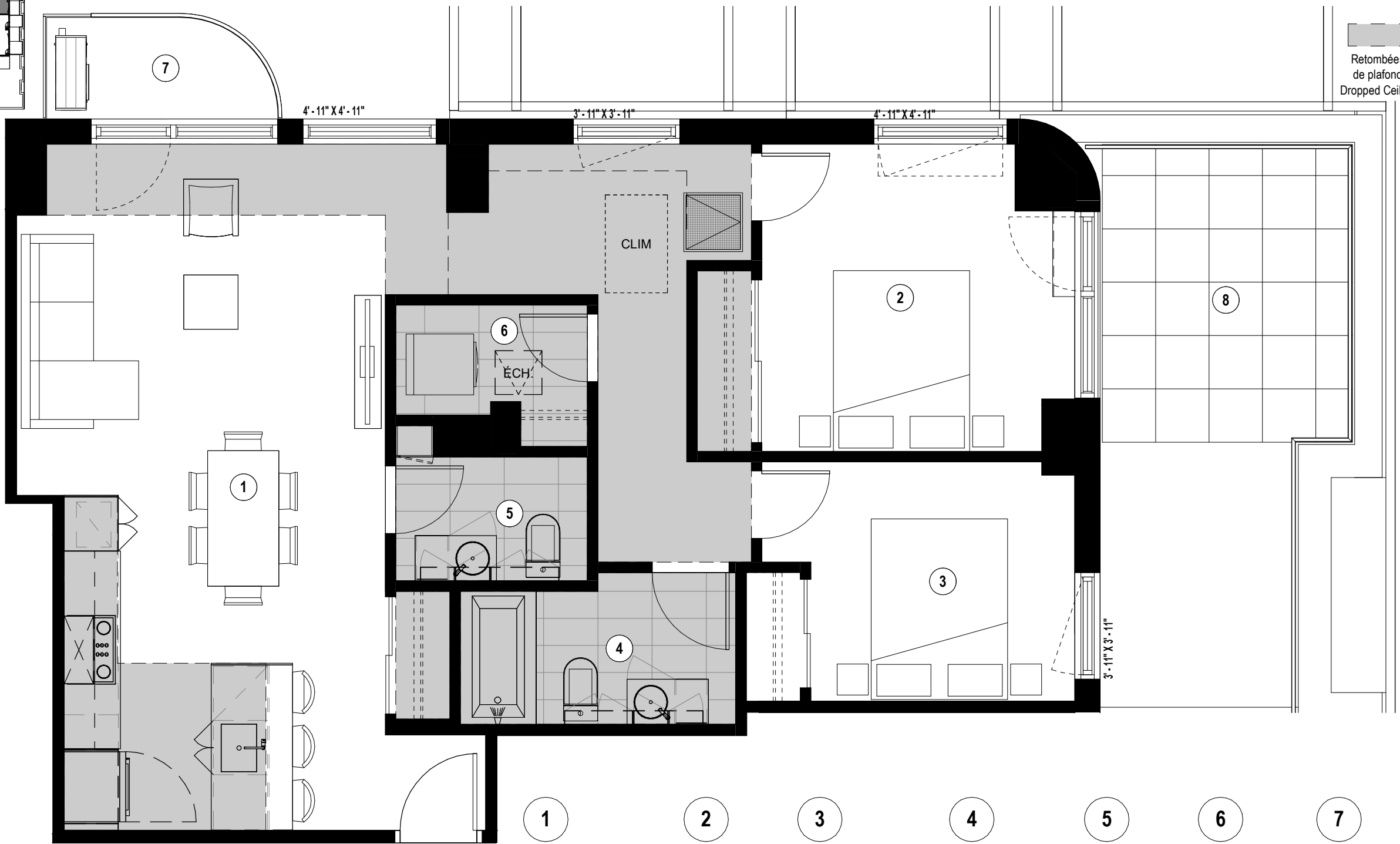


Retombées de plafond
Dropped Ceiling



- ①
- ②
- ③
- ④
- ⑤
- ⑥
- ⑦
- ⑧

Séjour - Salle à manger - Cuisine Living Room - Dining Room - Kitchen 13'-7"/11'-10" x 25'-4"/12'-10"	Chambre Principale Master Bedroom 11'-7" x 11'-4"	Chambre 2 2nd Bedroom 9'-9" x 8'-10"	Salle de bain Bathroom 10'-2"/5'-1" x 5'-7"/5'-0"	Salle d'eau Wash Room 7'-1" x 4'-7"	Buanderie Laundry Room 7'-1" x 4'-1"	Balcon Balcony 8'-6"/5'-0" x 3'-9"	Terrasse Terrace 9'-2" x 10'-10"
-------------------------------------------------------------------------------------------------------------	---------------------------------------------------------	--------------------------------------------	---------------------------------------------------------	-------------------------------------------	--------------------------------------------	------------------------------------------	----------------------------------------

Plans préliminaires sujets à changement. La superficie brute des logements n'inclut pas celle des balcons et/ou terrasses. La superficie et la dimension des plans de vente sont approximatives et peuvent varier. / Preliminary plans subject to modifications. The unit area excludes the balcony and/or terraces. The areas are approximate and are subject to variation.



TYPE
G1A

UNITÉ(S) - UNIT(S)
417

SUPERFICIE - AREA
953 pi²/sq²

Phase 3



EXTERIOR AND BUILDING FEATURES

- Brick and metal panel cladding
- Interior green courtyard with outdoor furniture
- Concrete structure

UNIT FEATURES

- Slab-to-slab ceiling height of about 9' (except on the ground floor)
- Exposed concrete ceiling with sealer (except on the last floor)
- Choice of pre-varnished engineered wood floors
- Living room wall reinforcement for television

KITCHEN

- Choice of cabinet colours and finishes
- Choice of quartz countertops
- Choice of ceramic tile backsplash
- Stainless steel single sink with lever faucet
- Included appliances (varies by unit):
 - ⇒ Built-in hood or microwave hood
 - ⇒ Panel-ready Blomberg refrigerator 24" or stainless steel Fisher & Paykel refrigerator 31"
 - ⇒ Fulgor 24" or 30" built-in range and cooktop
 - ⇒ Bloomberg 18" or 24" panel-ready dishwasher

BATHROOM

- Choice of ceramic tiles
- Black or chrome fixtures
- Drop-in bathtub with ceramic tile podium
- Choice of colours and finishes for the vanity and medicine cabinet
- Choice of quartz counters

ELECTRICAL AND TECHNICAL FEATURES

- Electric baseboard heaters with digital thermostats
- Air exchanger
- Central air conditioner or with compressor (depending on unit)
- Pre-wired Ethernet CAT6
- Pre-wired to the unit for fibre optics
- White or black track lighting in the kitchen and LED lighting under part of the cabinets
- Two recessed ceiling lights in the bathroom and integrated LED lighting in the medicine cabinet
- Lighting outlet in the bedroom ceiling, in the wall at the entrance, and in the dining room

COMMON SPACES AND AMENITIES

- Two elevators
- Access to the temporary fitness centre in Lot 2
- Permanent fitness centre on a future lot
- Furnished lobby
- Furnished coworking space
- Rooftop terrace with pool, barbecues, and outdoor furniture

OTHER AMENITIES

- Secure access for residents with key fob entry, security camera system, and intercom
- Centralized hot water
- Registered with the Guarantee of Construction Quality (GHMB) by Master Builders