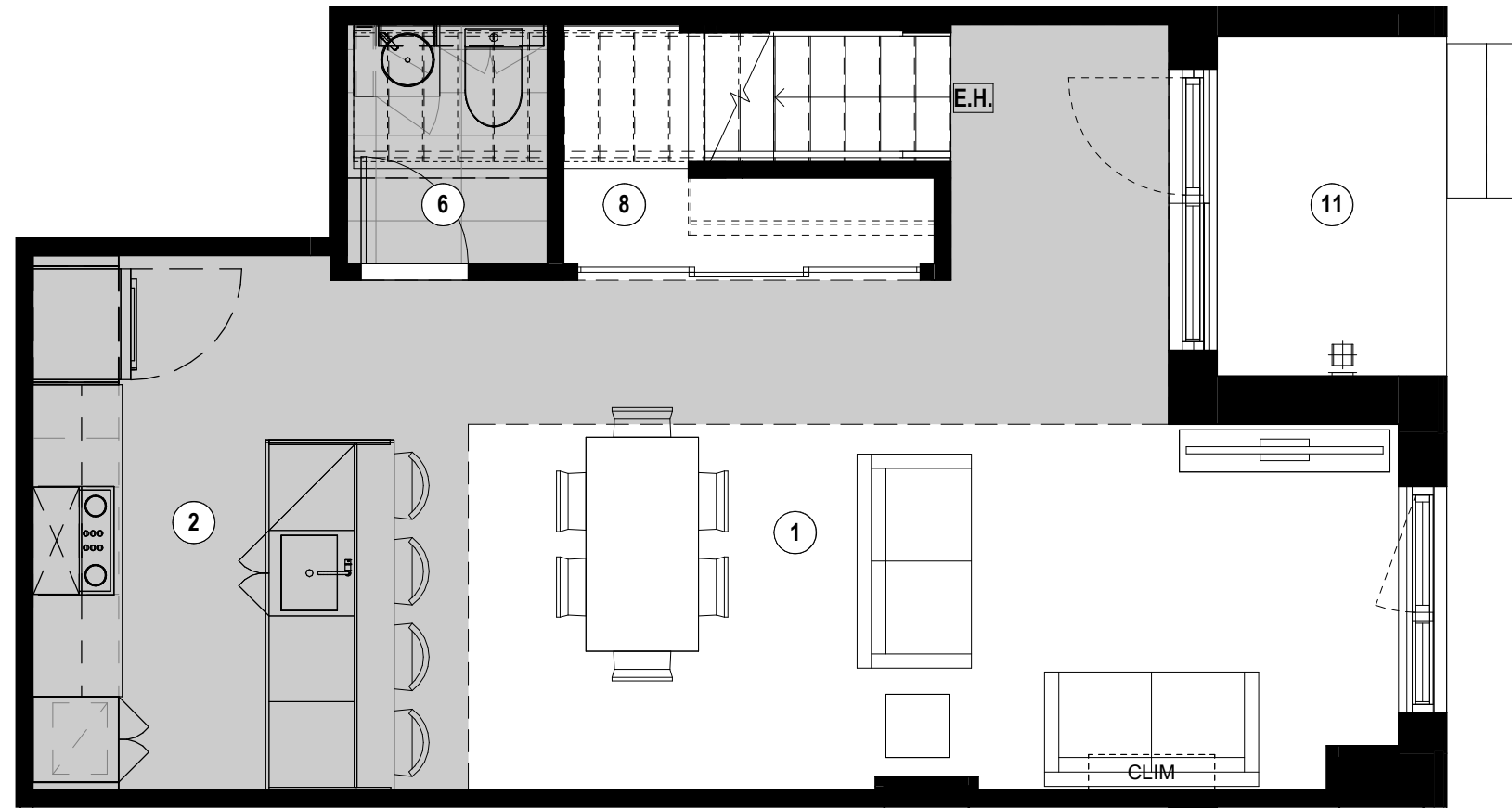


Retombées
de plafond
Dropped Ceiling



- 1

Séjour - Salle à manger
Living Room - Dining Room
24'-4" / 19'-0" x 12'-0" / 8'-6"
- 2

Cuisine
Kitchen
7'-6" x 12'-6"
- 6

Salle d'eau
Wash Room
4'-8" x 5'-7"
- 8

Rangement
Storage
3'-0" x 5'-7"
- 11

Terrasse
Terrace
5'-4" x 8'-0"

Plans préliminaires sujets à changement. La superficie brute des logements n'inclut pas celle des balcons et/ou terrasses. La superficie et la dimension des plans de vente sont approximatives et peuvent varier. / Preliminary plans subject to modifications. The unit area excludes the balcony and/or terraces. The areas are approximate and are subject to variation.

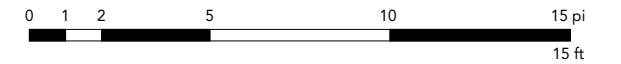
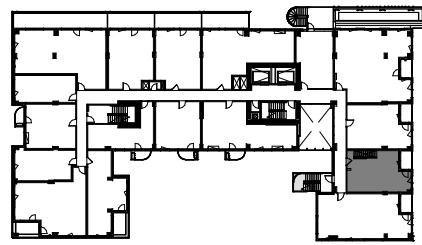


TYPE
H6 ET-1

UNITÉ(S) - UNIT(S)
121

SUPERFICIE - AREA
1068 pi²/sq²

Phase 3



Retombées de plafond
Dropped Ceiling



- 3

Chambre Principale
Master Bedroom
12' - 0" x 9' - 0"
- 4

Chambre
Bedroom
9' - 2" x 8' - 7"
- 5

Salle de bain
Bathroom
5' - 0" x 9' - 0"
- 7

Walk-in

5' - 6" x 4' - 8"
- 9

Buanderie
Laundry Room
4' - 0" x 4' - 8"
- 10

Balcon
Balcony
4' - 10" x 8' - 0"

Plans préliminaires sujets à changement. La superficie brute des logements n'inclut pas celle des balcons et/ou terrasses. La superficie et la dimension des plans de vente sont approximatives et peuvent varier. / Preliminary plans subject to modifications. The unit area excludes the balcony and/or terraces. The areas are approximate and are subject to variation.



TYPE
H6 ET-2

UNITÉ(S) - UNIT(S)
121

SUPERFICIE - AREA
1068 pi²/sq²

Phase 3



EXTERIOR AND BUILDING FEATURES

- Brick and metal panel cladding
- Interior green courtyard with outdoor furniture
- Concrete structure

UNIT FEATURES

- Slab-to-slab ceiling height of about 9' (except on the ground floor)
- Exposed concrete ceiling with sealer (except on the last floor)
- Choice of pre-varnished engineered wood floors
- Living room wall reinforcement for television

KITCHEN

- Choice of cabinet colours and finishes
- Choice of quartz countertops
- Choice of ceramic tile backsplash
- Stainless steel single sink with lever faucet
- Included appliances (varies by unit):
 - ⇒ Built-in hood or microwave hood
 - ⇒ Panel-ready Blomberg refrigerator 24" or stainless steel Fisher & Paykel refrigerator 31"
 - ⇒ Fulgor 24" or 30" built-in range and cooktop
 - ⇒ Bloomberg 18" or 24" panel-ready dishwasher

BATHROOM

- Choice of ceramic tiles
- Black or chrome fixtures
- Drop-in bathtub with ceramic tile podium
- Choice of colours and finishes for the vanity and medicine cabinet
- Choice of quartz counters

ELECTRICAL AND TECHNICAL FEATURES

- Electric baseboard heaters with digital thermostats
- Air exchanger
- Central air conditioner or with compressor (depending on unit)
- Pre-wired Ethernet CAT6
- Pre-wired to the unit for fibre optics
- White or black track lighting in the kitchen and LED lighting under part of the cabinets
- Two recessed ceiling lights in the bathroom and integrated LED lighting in the medicine cabinet
- Lighting outlet in the bedroom ceiling, in the wall at the entrance, and in the dining room

COMMON SPACES AND AMENITIES

- Two elevators
- Access to the temporary fitness centre in Lot 2
- Permanent fitness centre on a future lot
- Furnished lobby
- Furnished coworking space
- Rooftop terrace with pool, barbecues, and outdoor furniture

OTHER AMENITIES

- Secure access for residents with key fob entry, security camera system, and intercom
- Centralized hot water
- Registered with the Guarantee of Construction Quality (GHMB) by Master Builders