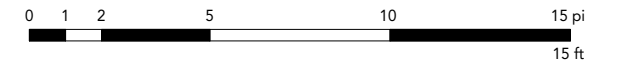
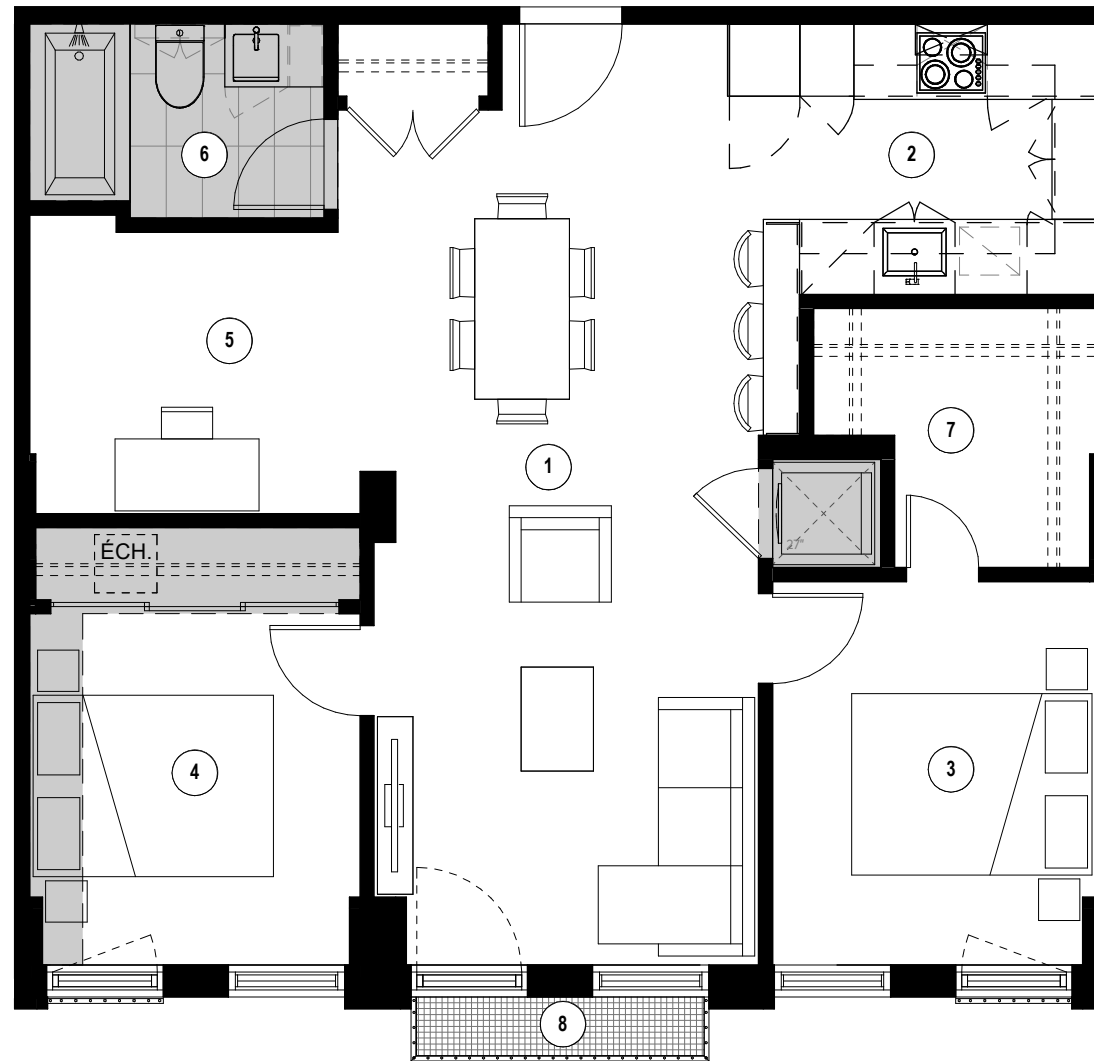


RUE PARTHENAIS

RUE STE-CATHERINE



Retombées
de plafond
Dropped Ceiling



- | | | | | | | | |
|---|--|--|---|--|--|--|--|
| 1 | 2 | 3 | 4 | 5 | 6 | 7 | 8 |
| Séjour - Salle à manger
Living Room - Dining Room
10' - 8" x 23' - 9" | Cuisine
Kitchen
10' - 3" x 7' - 6" | Chambre
Bedroom
9' - 0" x 10' - 8" | Chambre
Bedroom
9' - 2" x 9' - 9" | Bureau
Office
9' - 7" x 7' - 10" | Salle de bain
Bathroom
8' - 2" x 5' - 5" | Walk-in
5' - 7" / 8' - 0" x 7' - 2" / 3' - 8" | Balcon
Balcony
8' - 0" x 1' - 8" |

Plans préliminaires sujets à changement. La superficie brute des logements n'inclut pas celle des balcons et/ou terrasses. La superficie et la dimension des plans de vente sont approximatives et peuvent varier. / Preliminary plans subject to modifications. The unit area excludes the balcony and/or terraces. The areas are approximate and are subject to variation.



TYPE
F11A

UNITÉ(S) - UNIT(S)
539, 639, 739

SUPERFICIE - AREA
828 pi²/sq²



EXTERIOR AND BUILDING FEATURES

- Architecture echoes the neighbourhood's past.
- Brick, ventilated ceramic, and aluminum cladding.
- Interior green courtyard.
- Concrete structure.

CONDOMINIUM FEATURES

- The units have a slab-to-slab ceiling height of about nine feet.
- Exposed concrete ceilings (except on the last floor).
- Closets with shelves.
- Choice of engineered wood floors.
- Wall reinforcement for television.

KITCHEN

- Choice of quartz countertops.
- Choice of cabinet colours and finishes.
- Choice of ceramic backsplash.
- Stainless steel kitchen sink with lever faucet and sprayer.
- Included appliances:
 - ⇒ 24-inch panel-ready Blomberg refrigerator.
 - ⇒ 24-inch Fulgor built-in range and cooktop.
 - ⇒ 18- or 24-inch panel-ready Blomberg dishwasher, depending on the unit.
 - ⇒ Built-in hood.
 - ⇒ Microwave with built-in hood in certain units.

BATHROOMS

- Choice of ceramic tiles for floor and walls.
- Wall mirror and medicine cabinet.
- Vanity with storage and choice of colours and finishes.
- Hand-held shower head and rain shower (black or chrome).
- Drop-in bathtub with ceramic tile podium.

ELECTRICAL AND TECHNICAL FEATURES

- Two recessed lights and a lighting outlet in the bathroom ceiling.
- Lighting outlet in the bedroom ceiling, in the wall at the entrance and in the dining room.
- LED lighting under the cabinets and track light in the kitchen.
- Telephone, Internet and cable jacks.
- Pre-wired for fibre optics.
- Air exchanger.
- Electric baseboard heaters with digital thermometer.
- Air conditioning with compressor.

COMMON AREAS AND EXCLUSIVE AMENITIES

- Ground-floor lobby in each phase featuring an eclectic décor, plants, a lounge area and telecommuting workspace.
- Two elevators per phase.

COMMON AREAS AND SHARED AMENITIES

- Phase 2 rooftop terrace with a rectangular pool over 100 metres in length, lounge and BBQ areas.
- Phase 1 rooftop terrace with outdoor furniture, plants, and fireplace.
- Aerial walkway connecting Phase 1's and Phase 2's terraces.
- Basement fitness centre with strength-training equipment.
- Shared fitness centre with interior pool and spa on a future lot.

OTHER FEATURES

- Garbage chute system.
- Centralized water heater.
- Secure access for residents, intercom, and key fob entry.
- Registered with the Guarantee of Construction Quality (GHMB) by Master Builders.
- Aiming for GOLD LEED® v4 BD+C Multifamily Midrise Certification.